



Not to scale.



CODES & TESTING

ASTM C-1513

ASTM B-117

MATERIAL SPECIFICATIONS

Carbon steel with proprietary exterior grade coating

PRODUCT DESCRIPTION

Weather resistant, ceramic coated self-drilling screws. Available in lengths from 1-5/8" up to 6". Used for attaching continuous insulation, lath, and building wrap to heavy gauge steel studs.

PRODUCT FEATURES

- Ceramic coating for corrosion resistance, ASTM B117.
- Available in bulk (1-5/8" - 6") or collated (1-5/8" - 3").
- Self-drilling for attachment to heavy gauge steel studs (12 ga. thru 18 ga.).
- Phillips drive with bugle head.

APPROPRIATE ACCESSORIES

Use with Grip-Lok® Autofeed Fastening System with various nose adaptors for rapid attachment of lath, insulation, building wrap, etc.



PRODUCT SELECTION (see back for product specifications)

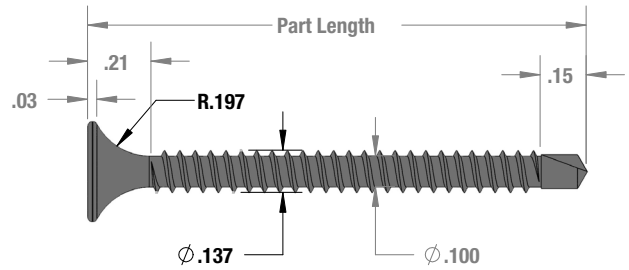
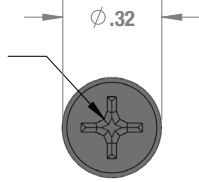
Part No.	Part Length	Pkg. Qty.	Pkg. Wt.	Packaging Type
FSD06-1625	#6 x 1-5/8"	1000 pcs.	6 lbs.	Bulk
FSD06C-1625	#6 x 1-5/8"	1000 pcs.	6 lbs.	Collated*
FSD06-2000	#6 x 2"	1000 pcs.	6 lbs.	Bulk
FSD06C-2000	#6 x 2"	1000 pcs.	6 lbs.	Collated*
FSD08-2500	#8 x 2-1/2"	1000 pcs.	10 lbs.	Bulk
FSD08C-2500	#8 x 2-1/2"	1000 pcs.	10 lbs.	Collated*
FSD08C-3000	#8 x 3"	1000 pcs.	12 lbs.	Collated*
FSD10-3000	#10 x 3"	1000 pcs.	12 lbs.	Bulk
FSD10-3500	#10 x 3-1/2"	1000 pcs.	18 lbs.	Bulk
FSD10-4000	#10 x 4"	1000 pcs.	22 lbs.	Bulk
FSD10-4500	#10 x 4-1/2"	1000 pcs.	24 lbs.	Bulk
FSD10-5500	#10 x 5-1/2"	1000 pcs.	29 lbs.	Bulk
FSD10-6000	#10 x 6"	1000 pcs.	31 lbs.	Bulk

*For use with Grip-Lok® Autofeed Fastening System

PRODUCT SPECIFICATIONS

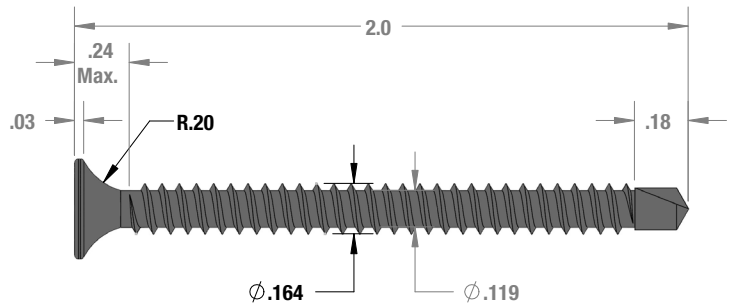
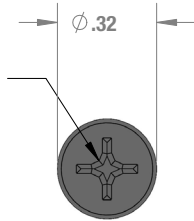
#6 FSD06 Fastener

No. 2 Type I Cross Recess



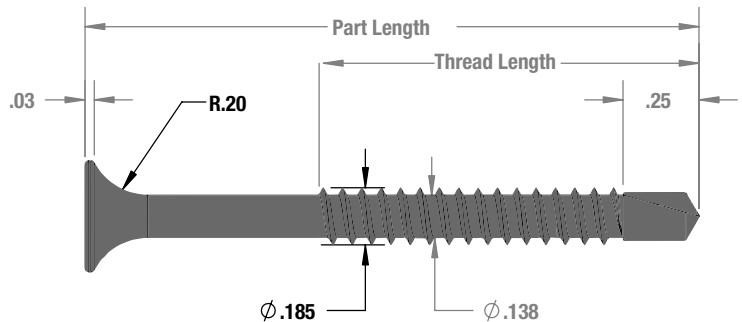
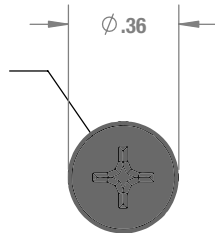
#8 FSD08 Fastener

No. 2 Type I Cross Recess



#10 FSD10 Fastener

No. 2 Type I Cross Recess



INSTALLATION GUIDELINES

Recommended screw length is dependent on assembly thickness.
Minimum of 4 threads penetration through the steel is required.

Bulletin No. TFW-24032

DISCLAIMER

The information provided here is subject to change without notice. The performance specifications published in this TRUFAST® Walls product literature are based on controlled laboratory tests and are intended as a guideline only. They are not guaranteed in any way by the ALTENLOH, BRINCK & CO. US, INC., since building

design, engineering, and construction, including workmanship and materials, are beyond the control of the manufacturer. The manufacturer recommends that pull-out tests be conducted to verify the substrate provides adequate pull-out values.